

# Quick Start Guide

## Modular & Enterprise IoT Development Kit

Quickly connect your devices to hIoTTron IoT platform

- Device Setup
- Platform Setup
- Verify connectivity

Build your project in just 3 simple steps

- Create
- Customize
- Simulate

# Quickly connect your devices to platform

## Device Setup

We assume that you have gone through the front page of this manual completely and now, very well aware with your Hi-Gate & Hi-Node devices. If not, then please read it carefully.

For getting started with this kit, we will perform one small practical (You can call it theft detection or simple High/Low) for which you need to interface IR sensor (given in the box) to digital input channel of Hi-Gate.

Once you are done with interfacing then power-up your Hi-Gate using USB cable (5V).



Once you power-up Hi-Gate then you can connect it to internet using Wi-Fi or GSM.

1. In case of Wi-Fi, provide credentials (SSID & Password) using mobile app  
<https://play.google.com/store/apps/details?id=com.hiotron.generic&hl=en>

[If 3rd Blue light become stable it means Hi-Gate connected to your Wi-Fi router successfully]



Or in case of GSM or cellular connectivity, simply insert your sim-card & type APN (Access Point Name) of your network provider in the same mobile app  
<https://play.google.com/store/apps/details?id=com.hiotron.generic&hl=en>

[If 2<sup>nd</sup> Blue light become stable & buzzer beep for almost 5 sec. it means Hi-Gate connected to your GSM network successfully]

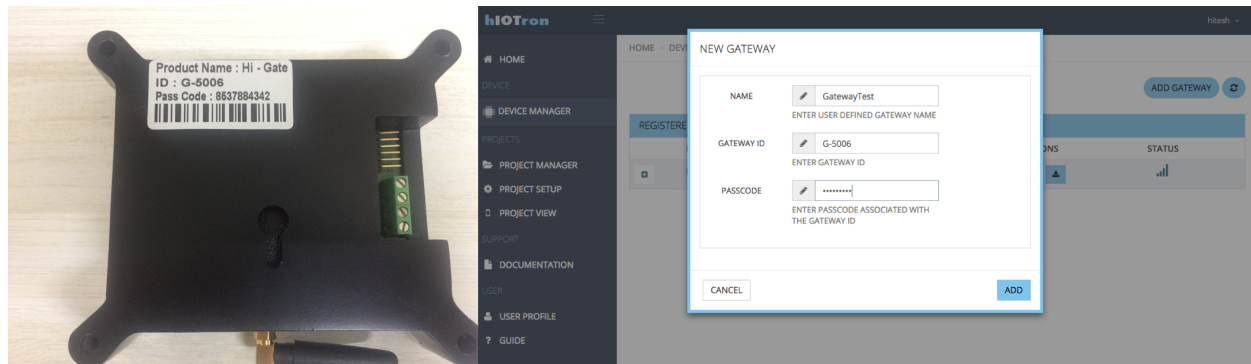


## Platform Setup

Now, for getting started with this kit you need to register or login to <https://www.platform.hiotron.com>

Once you are login to your account then  
Click to device manager → Add Gateway (Right corner of your screen)

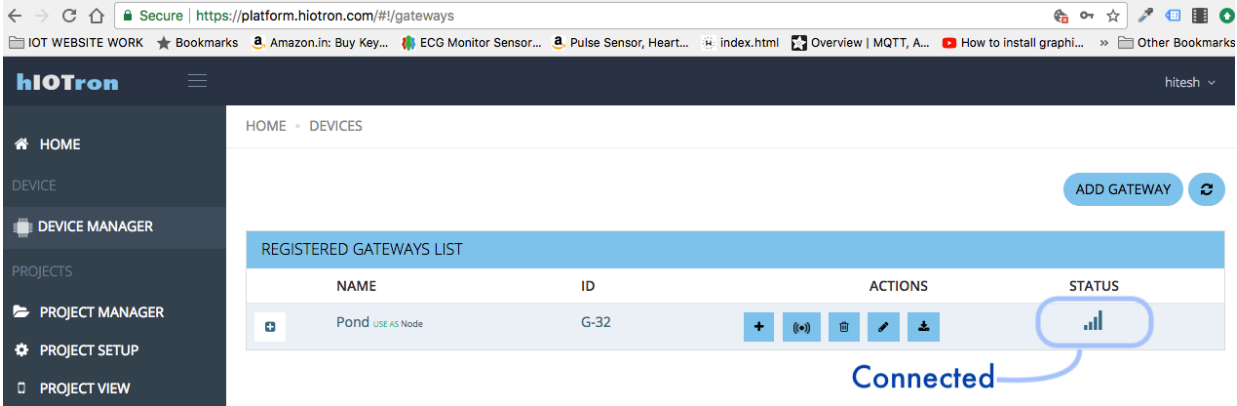
Now give your Hi-Gate credentials provided at the back side of Hi-Gate Box and then click **ADD** button on screen.





## Verify connectivity

Once you have added your Hi-Gate successfully then you should see your Hi-Gate in the below registered gateway list.



The screenshot shows the hIOTron web interface. The browser address bar displays 'Secure | https://platform.hiotron.com/#/gateways'. The left sidebar contains navigation links: HOME, DEVICE, DEVICE MANAGER, PROJECTS, PROJECT MANAGER, PROJECT SETUP, and PROJECT VIEW. The main content area is titled 'HOME - DEVICES' and features an 'ADD GATEWAY' button. Below this is a table titled 'REGISTERED GATEWAYS LIST' with columns for NAME, ID, ACTIONS, and STATUS. A single gateway is listed with the name 'Pond USE AS Node' and ID 'G-32'. The STATUS column for this gateway shows a signal strength icon, which is circled in blue. A blue callout bubble with the word 'Connected' points to this icon.

NAME	ID	ACTIONS	STATUS
Pond USE AS Node	G-32	[+], [signal], [trash], [edit], [share]	[signal icon] <b>Connected</b>

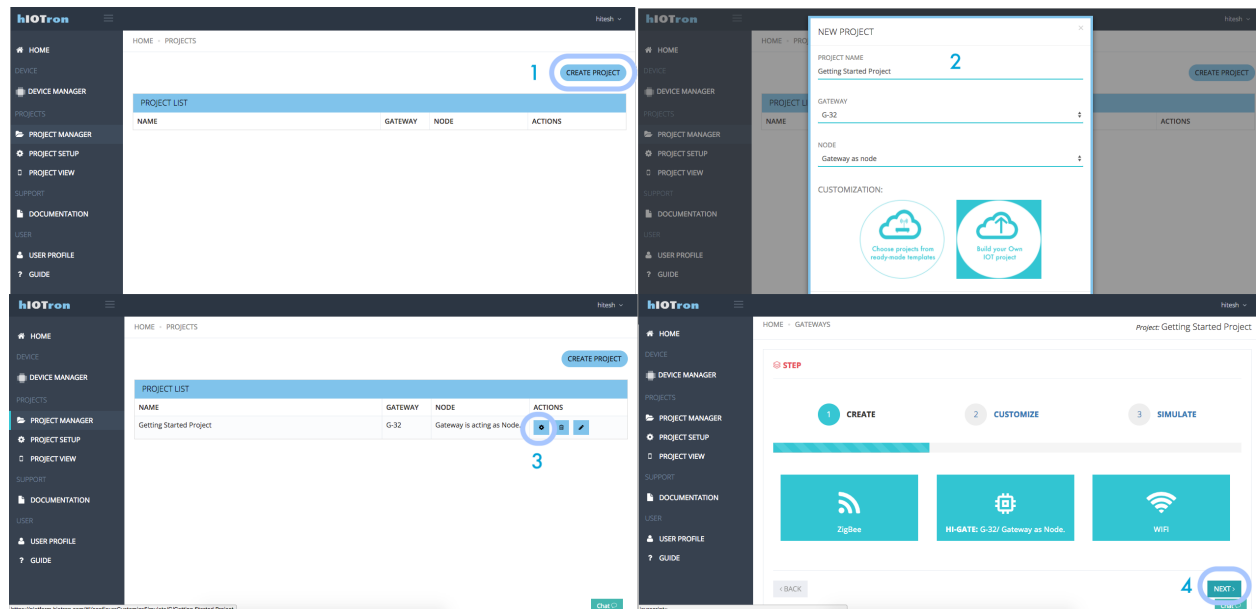
Wait for 15 sec. and check its status, if connected it means you are ready to build your first project otherwise check your internet connection or perform all above steps carefully. If you are still unable to connect then please contact our support team at [support@hiotron.com](mailto:support@hiotron.com)

# Build your project in just 3 simple steps

## Create

You can click to create project button on the right corner under project manager on <https://platform.hiotron.com>.

Now you can click to the setting icon of your project you just created. Here you will see your gateway id & connection mode & then click next.

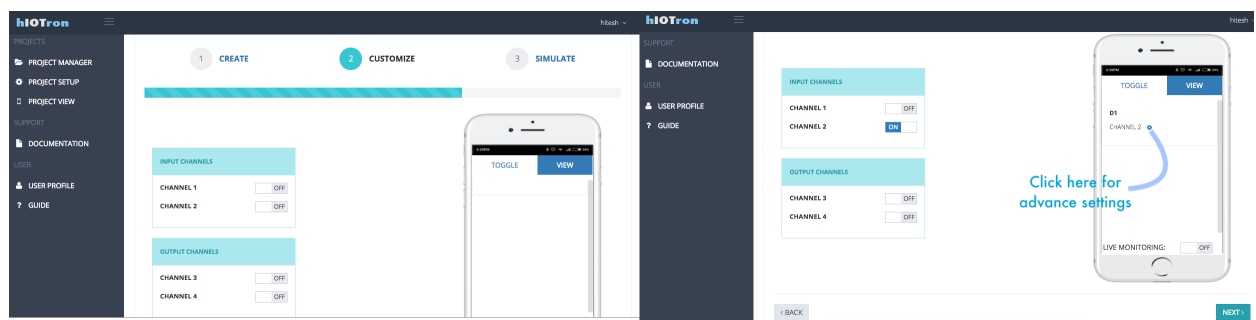


## Customize

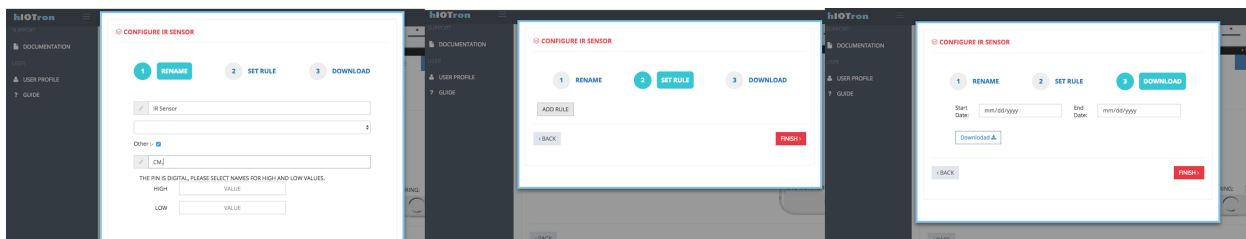
Here you are on the 2<sup>nd</sup> step of your project where you can simply enable (make it on) digital pin of input channel.

Once you do that same changes will reflect on your custom mobile app on the right hand side and click to the next button.

[Note: You can also further customize this pin for advance features by clicking to the setting icon on the mobile app view such as rename, custom unit, rules setup, data export, analytics and many more by following latest documentation available in online & offline mode (both) at <https://platform.hiotron.com>]



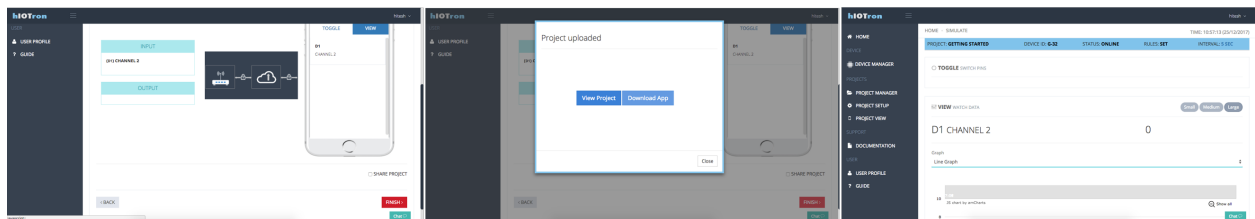
## Advance options



## Simulate

Finally, here you can verify your complete project just created and click to the finish button which will pop-up a window for asking project view in either Dashboard or Mobile app.

Select any view you like, let's if you select dashboard view then you can see your IR sensor value 0 initially and if you keep your hand in front of sensor then it will become 1.



That's all, Now, enjoy with this kit and build your innovative prototypes for any IoT application in minutes and see results immediately.